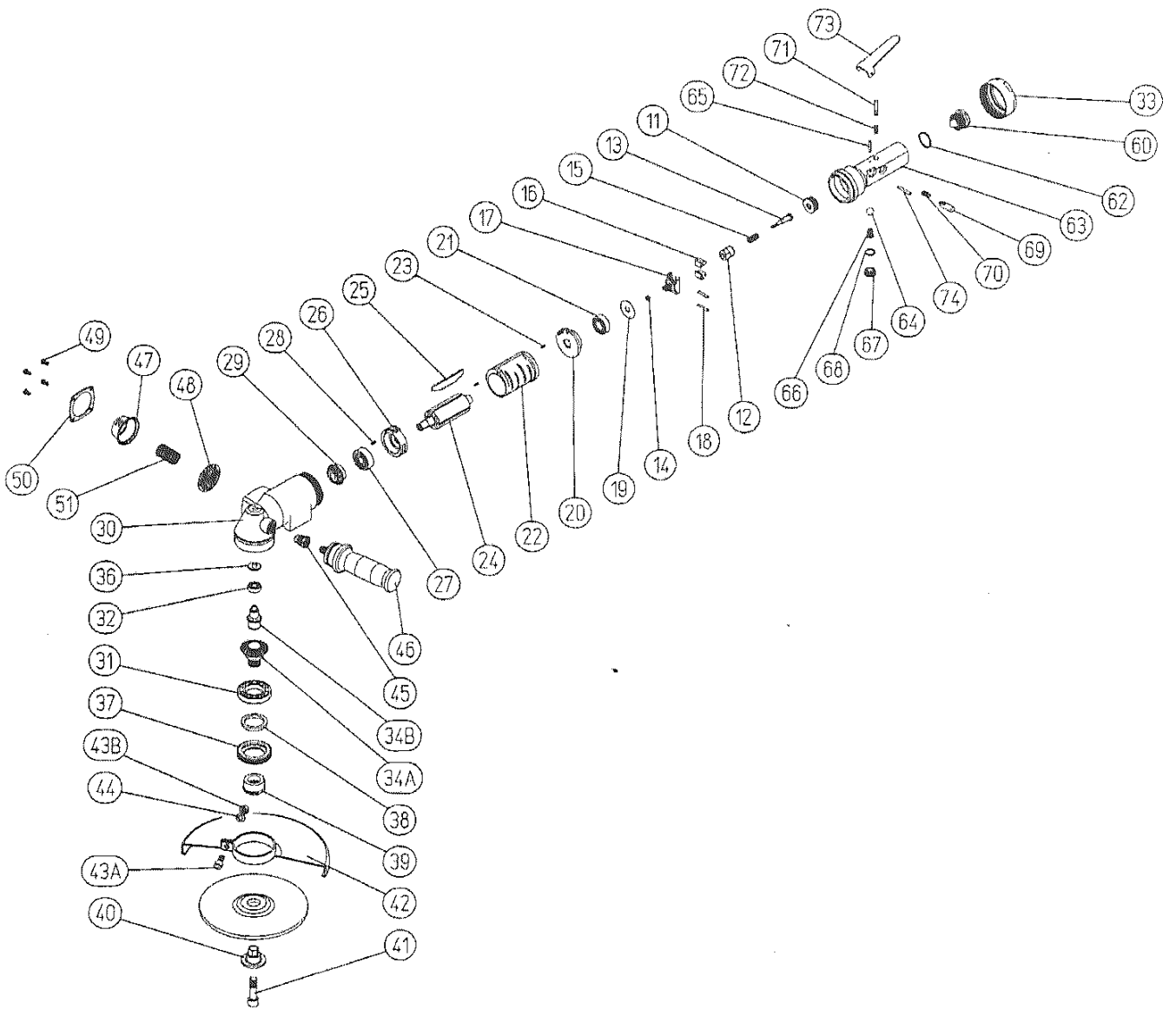


Exploded view

Angle grinder TAG-900 QJL



Partslist

Angle grinder TAG-900 QJL

Symbol No.	Parts No.	Q'ty. Req.	Description	Symbol No.	Parts No.	Q'ty. Req.	Description
11	42-04-17-M30	1	Governor Bushing	41	42-04-17-N10	1	Set Screw M12×40
12	42-04-11-L60	1	Governor Valve	42	42-04-27-U00	1	Wheel Cover 230mm
13	42-04-11-L70	1	Governor Set Screw	43A	13-17-08-020	1	Hex. Socket Head Cap Screw M8×20
14	13-44-01-004	1	Hex. Nut M4	43B	13-44-01-008	1	Hex. Nut M8
15	13-08-02-204	1	Governor Spring	44	13-13-01-008	1	Spring Washer M8
16	42-04-11-L90	2	Governor Weight	45	42-04-06-A20	1	Case Bushing
17	42-04-11-M00	1	Governor Body	46	42-04-03-20B	1	Dead Handle
18	13-06-03-122	2	Spring Pin 3.5×22	47	42-04-17-W10	1	Muffler Hat
19	42-04-17-M10	1	Governor Body Washer	48	13-74-02-002	1	Muffler Screen
20	42-04-17-C80	1	Rear Plate	49	13-24-05-010	4	Cross Recessed Round Head Screw M5×10
21	13-01-04-103	1	Ball Bearing 60022RU	50	42-04-17-W20	1	Muffler Flange
22	42-04-17-D50	1	Cylinder	51	13-08-02-119	1	Muffler Spring
23	13-06-03-008	2	Spring Pin 3×8	60	42-04-20-N5B	1	Air Inlet CP P.T.
24	42-04-17-E00	1	Rotor	62	13-11-03-019	1	O-Ring S-24
25	13-71-01-026	4	Vane	63	42-04-22-C00	1	Valve Body
26	42-04-18-E80	1	Front Plate	64	13-05-05-112	1	Ball M12
27	13-01-10-002	1	Ball Bearing 6301	65	13-04-02-125	1	Valve Pin
28	13-06-03-008	1	Spring Pin 3×8	66	13-08-02-202	1	Valve Spring
29	42-04-17-M60	1	Pinion Gear	67	42-04-20-B40	1	Valve Cap
30	42-04-18-A00	1	Case	68	13-11-03-012	1	O-Ring S-14
31	13-01-16-106	1	Ball Bearing 16006ZZ	69	42-04-20-D00	1	Push Button
32	13-01-01-008	1	Ball Bearing 608	70	13-08-02-144	1	Push Button Spring
33	42-04-17-A50	1	Case Nut	71	42-04-20-C20	1	Lock Pin
34	42-04-17-M5A	1	Bevel Gear CP (34A&34B)	72	13-08-02-143	1	Lock Spring
36	42-04-17-N00	1	Upper Cap	73	42-02-10-VH0	1	Valve Lever
37	42-04-17-G10	1	Bearing Nut	74	13-06-04-028	1	Spring Pin 4×28
38	13-63-02-108	1	Felt		42-04-29-M0C	(1CP)	Governor Assy (Incl. Index No.12,13,14,15, 16,17&18)
39	42-04-17-H50	1	Wheel Carrier				
40	42-04-23-H00		Wheel Ring 22mm		42-04-17-D5C	(1CP)	Cylinder CP (Incl. Index No.22&23)