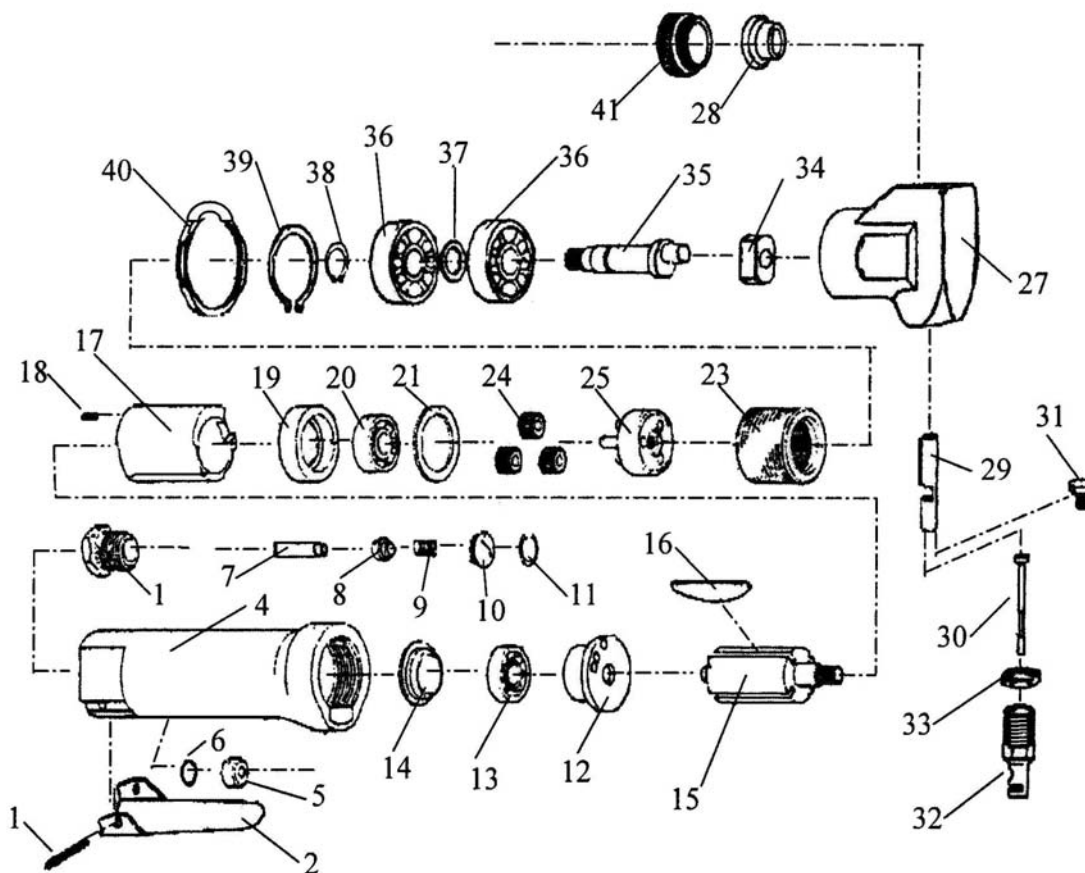


Nibbler - Knabber - Knabbelschaar - Grignoteuse



| ITEM NO. | REF. NO. | DESCRIPTION |
|----------|----------|-------------------|
| 1 | KD0001 | AIR INLET BUSHING |
| 2 | KD0002 | THROTTLE LEVER |
| 3 | KD0003 | HANDLE PIN |
| 4 | KD0004 | HANDLE THROTTLE |
| 5 | KD0005 | O RING KEEPER |
| 6 | KD0006 | O RING |
| 7 | KD0007 | VALVE STEM |
| 8 | KD0008 | VALVE BALL |
| 9 | KD0009 | SRPING |
| 10 | KD0010 | PLUG |
| 11 | KD0011 | O RING |
| 12 | KD0012 | REAR END PLATE |
| 13 | KD0013 | BEARING |
| 14 | KD0014 | END PLATE CAP |
| 15 | KD0015 | ROTOR |
| 16 | KD0016 | VANES |
| 17 | KD0017 | CYLINDER |
| 18 | KD0018 | PIN |
| 19 | KD0019 | FRONT END PLATE |
| 20 | KD0020 | BEARING |

| ITEM NO. | REF. NO. | DESCRIPTION |
|----------|----------|---------------------|
| 21 | KD0021 | WASHER |
| 23 | KD0022 | GEAR CASE |
| 24 | KD0023 | IDLER-GEAR |
| 25 | KD0024 | REAR SPRINDLE |
| 26 | KD0025 | IDLER GEAR PIN |
| 27 | KD0026 | HEAD |
| 28 | KD0027 | PUSHING ROD BUSHING |
| 29 | KD0028 | PUSHING ROD |
| 30 | KD0029 | CUTTER |
| 31 | KD0030 | SCREW |
| 32 | KD0031 | DIES |
| 33 | KD0032 | NUT |
| 34 | KD0033 | DRIVE BUSHING |
| 35 | KD0034 | SHAFT |
| 36 | KD0035 | BEARING |
| 37 | KD0036 | WASHER |
| 38 | KD0037 | SNAP RING |
| 39 | KD0038 | SNAP RING |
| 40 | KD0039 | NUT |
| 41 | KD0040 | PLUG |