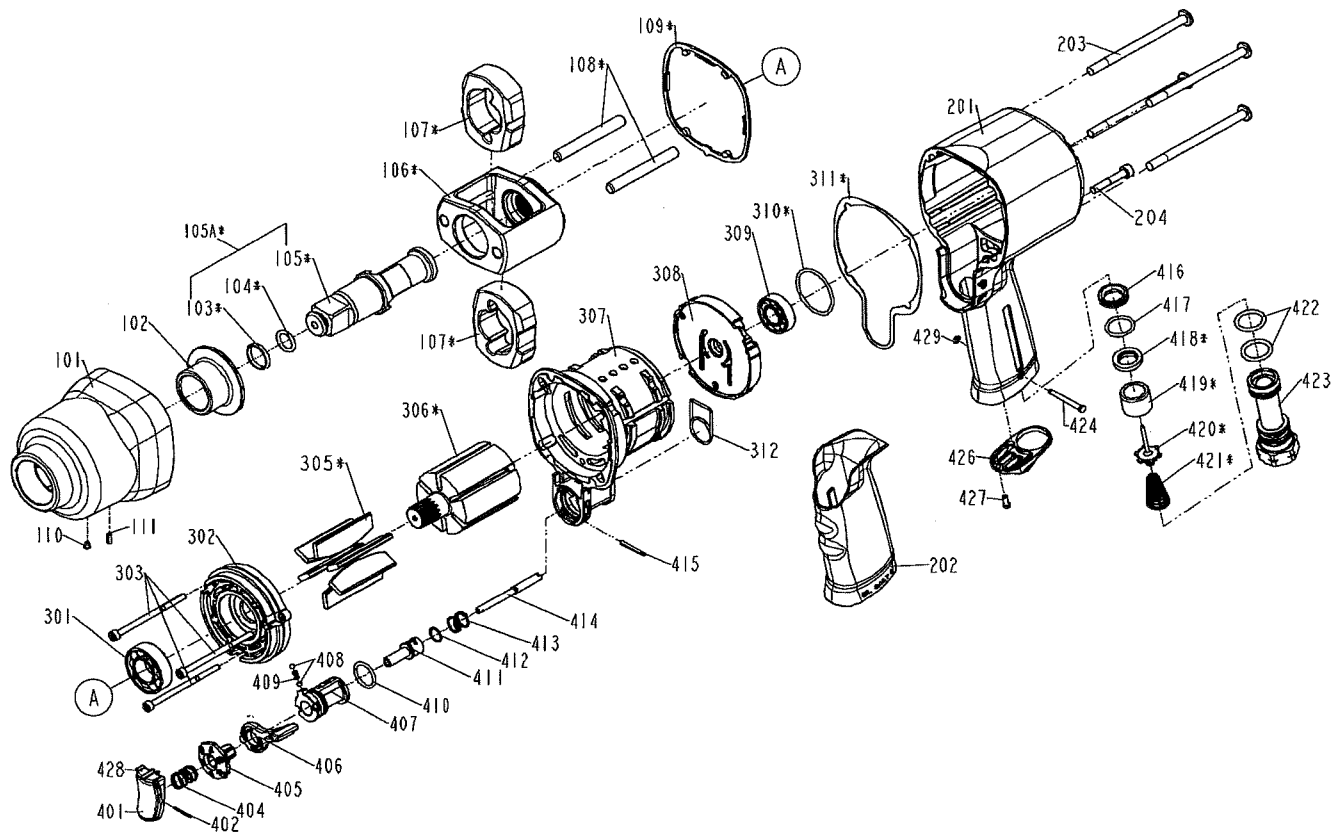


DIAGRAM OF SR5298



ITEM NO.	PART NO.	DESCRIPTION	ITEM NO.	PART NO.	DESCRIPTION	ITEM NO.	PART NO.	DESCRIPTION
101	12318-008A105-2	HAMMER CASE	408	2040800-01010-0	STEEL BALL			
102	1230K-0080007-1	HAMMER CASE BUSHING	409	1230J-0070002-1	SPRING			
103	2040306-00021-0	SOCKET RETAINER	410	2041105-02010-0	O - RING			
104	2041100-02030-0	O - RING	411	12304-0084703-1	REGULATOR B			
105	1230D-0080008-2	ANVIL	412	2041109-01030-0	O - RING			
105A	12227-0080007-3	ANVIL UNIT	413	12308-0080007-1	SPRING			
106	1230E-0080003-1	HAMMER FRAME	414	1230T-0084701-1	TRIGGER TIP			
107	1230C-0080002-1	HAMMER	415	2040400-04110-0	SPRING PIN			
108	1230B-0080002-2	HAMMER PIN	416	1230K-0080001-1	INSERT BUSHING			
109	12341-0084703-1	PACKING-HAMMER CASE	417	2041105-02070-0	O - RING			
110	2042400-00040-0	HAMMER CASE GREASE FITTING	418	12250-0164701-1	SEAL UNIT			
111	2040400-05040-0	SPRING PIN	419	1230K-0080006-2	BUSHING			
201	12302-0084708-1	HOUSING	420	12226-0080201-1	TIP VALVE			
202	1230N-0084715-2	HANDLE GRIP	421	12308-0080011-1	SPRING			
203	2040114-04021-2	HALF ROUND HD. STAR HEAD BOLT	422	2041109-02170-0	O - RING			
204	2040101-03121-2	HEX.SOC.HD.BOLT	423	12309-0084708-1	AIR INLET			
301	2041200-00240-0	BEARING	424	11344-0684703-1	LATCH PIN			
302	12312-0084702-1	MAGAZINE	426	12346-0084703-1	DEFLECTOR			
303	2040101-02220-2	HEX.SOC.HD.BOLT	427	2040107-01020-0	TAP BOLT			
305	12314-0080005-1	BLADES	428	12310-0084705-1	TRIGGER B			
306	12313-0080005-4	ROTOR	429	2040302-22010-0	E - RING			
307	12251-0084701-2	CYLINDER UNIT						
308	12316-0084701-1	REAR BEARING PLATE						
309	2041200-00088-0	BEARING						
310	2041102-03030-0	O - RING						
311	1230S-0084706-2	WASHER						
312	12341-0084701-1	PACKING-CYLINDER						
401	12310-0084704-2	TRIGGER A						
402	2040400-02080-0	SPRING PIN						
404	1230J-0134701-1	SPRING						
405	12304-0084704-1	REGULATOR A						
406	1230M-0084702-1	LEVER						
407	1230L-0084702-3	REVERSE VALVE						