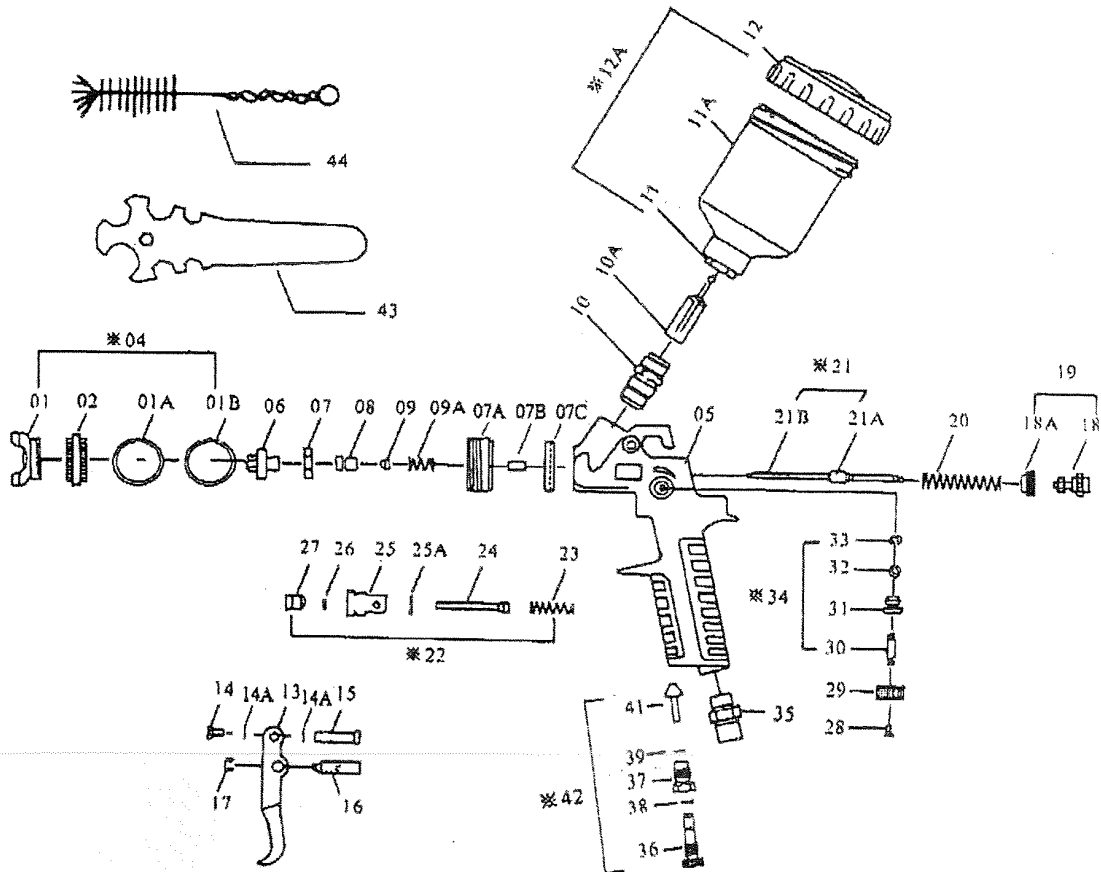


Spray gun



ITEM NO.	REF. NO.	DESCRIPTION
01	QS0001	AIR NOZZLE CAP
01A	QS0001A	BRASS WASHER
01B	QS0001B	C- WASHER
02	QS0002	BRASS CAP
*04	QS0004	AIR NOZZLE CAP SET
05	QS0005	GUN BODY
06	QS0006	FLUID NOZZLE
07	QS0007	GASKET PLASTIC
07A	QS0007A	BRASS WASHER FOR FLUID NOZZLE
07B	QS0007B	BRASS WASHER PIN
07C	QS0007C	TEFLON WASHER FOR BRASS WASHER
08	QS0008	PACKING SCREW
09	QS0009	TEFLON SEAL
09A	QS0009A	SPRING
10	QS0010	CONNECTOR
10A	QS0010A	MATERIAL SLEEVE
11	QS0011	CONNECTOR
11A	QS0011A	PLASTIC CUP
12	QS0012	COVER OF 0.25/PLASTIC CUP
*12A	QS0012A	PLASTIC CUP AND COVER SET
13	QS0013	TRIGGER
14	QS0014	TRIGGER SCREW
15	QS0015	TRIGGER SCREW
16	QS0016	TRIGGER PIN
17	QS0017	E-RING
18	QS0018	FLUID CONTROL KNOB
18A	QS0018A	LOCK NUT FOR FLUID CONTROL KNOB
20	QS0020	SPRING FOR PAINT NEEDLE

ITEM NO.	REF. NO.	DESCRIPTION
*21	QS0021	NEEDLE VALVE ASS'Y
21A	QS0021A	PAINT NEEDLE
21B	QS0021B	PAINT NEEDLE
*22	QS0022	AIR VALVE ASS'Y
23	QS0023	SPRING
24	QS0024	AIR VALVE STEM
25	QS0025	BUSHING
25A	QS0025A	P.V.C. SEAL
26	QS0026	TEFLON SEAL
27	QS0027	SCREW
28	QS0028	SCREW
29	QS0029	CONTROL KNOB
30	QS0030	SPRAY REGULATING SCREW
31	QS0031	SPRAY REGULATING NUT
32	QS0032	O-RING
33	QS0033	E-RING
34	QS0034	FAN CONTROL FOR ROUND AND FLAT SPRAY
35	QS0035	AIR CONNECTION PIECE 1/4" BSP
36	QS0036	CONTROL KNOB
37	QS0037	CONTROL NUT
38	QS0038	O-RING
39	QS0039	E-RING
41	QS0041	CONTROL STEM
42	QS0042	AIR ADJUSTING VALVE ASS'Y
43	QS0043	SPANNER
44	QS0044	BRUSH
		REPAIR KIT INCL.(07B.07C.09.09A.14A.17.20.23.25A.26.33.38.39)
		NOZZLE SET (0.5mm · 0.8mm · 1.0mm)

HAVE TO ORDER COMPLETE SET IF SPECIAL MARK "※" !